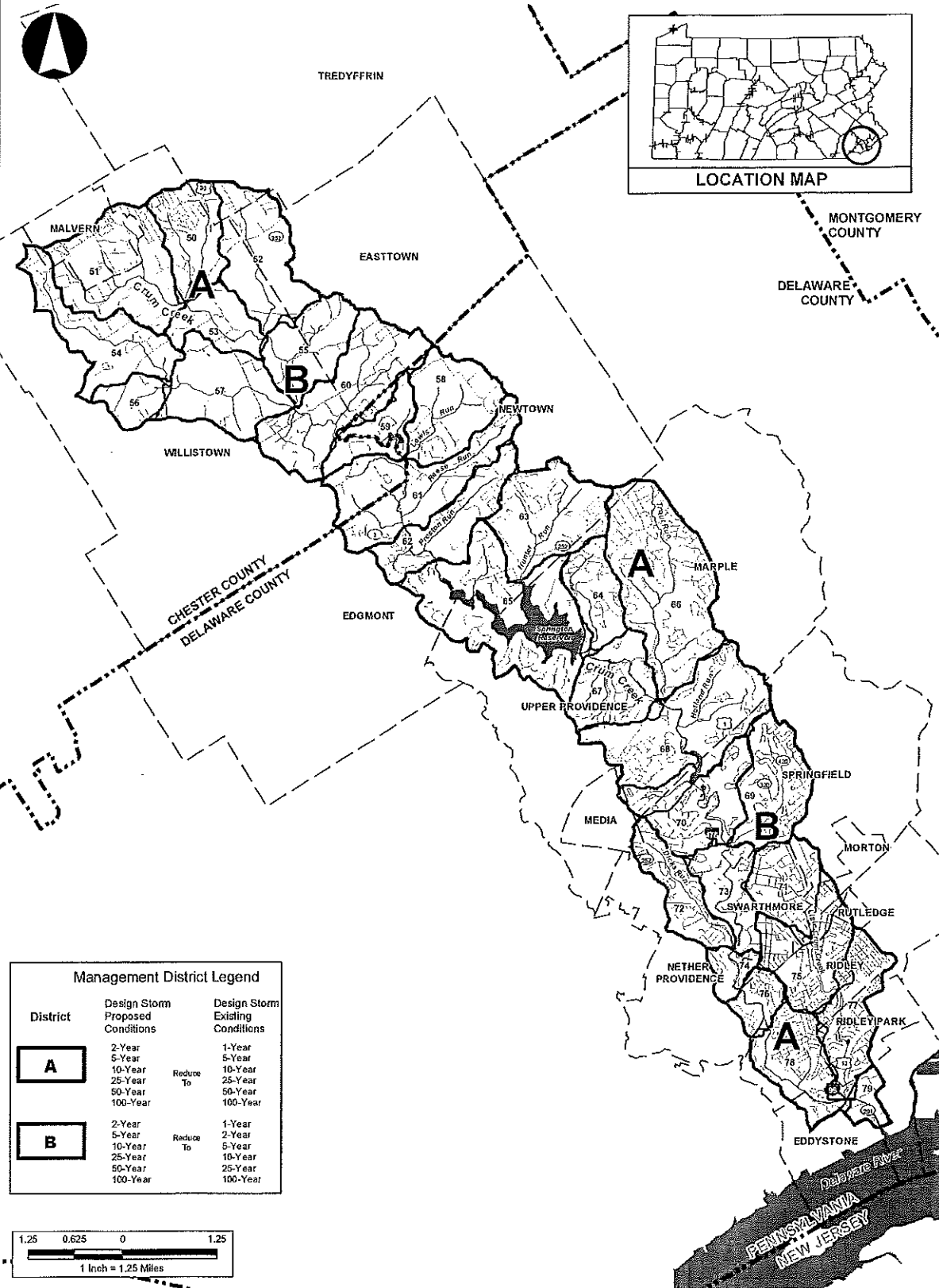
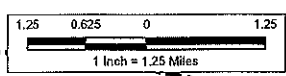


CRUM CREEK PHASE II - ACT 167 STORMWATER MANAGEMENT PLAN



District	Design Storm Proposed Conditions	Design Storm Existing Conditions
A	2-Year	1-Year
	5-Year	5-Year
	10-Year	10-Year
	25-Year	25-Year
	50-Year	50-Year
	Reduce To	100-Year
B	2-Year	1-Year
	5-Year	2-Year
	10-Year	5-Year
	25-Year	10-Year
	50-Year	25-Year
	Reduce To	100-Year




**APPENDIX A
MANAGEMENT DISTRICTS**

Prepared For:
Delaware County Planning Department
Courthouse and Government Center Bldg
201 West Front Street
Media, PA 19063
610-891-5200

	WATERSHED BOUNDARY		Roads
	SURFACE WATER		INTERSTATE
	STREAMS		US HIGHWAY
	SUBAREAS		PA HIGHWAY
	COUNTY BOUNDARIES		OTHER ROADS
	MUNICIPAL BOUNDARIES		

NOTE:
Portions of this map were generated from existing data sources as listed below. These data are shown on the map for spatial reference only. These data did not enter into any computations or affect the reliability of the hydrologic analysis. Barton-Lawson Engineering has found some inaccuracies in some of these data and has corrected the data in locations where discrepancies were obvious; however, it was not a part of this Act 167 Plan to correct all of the mapping data.

DATA SOURCES:
Watershed Boundary - PADEP
State Roads - PennDOT, 2004
Local Roads - PennDOT, 2001
Counties - PennDOT, 2002
Municipalities - PennDOT, 2001
Streams - PaDEP/USFWS, 2001
Lakes - Aqua America, 2001
Delaware River - USFWS (derived from NWI coverages)
Management Districts/Subareas - Delineated by Barton-Lawson, 2006



Northeast Pennsylvania
613 Baltimore Drive
Wilkes-Barre, PA 18702
Tel: 570-821-1999

Lehigh Valley
3693 Adler Place
Bethlehem, PA 18017
Tel: 484-921-0470

PREPARED BY: WSB CHECKED BY: SJD
Date: 10/08/2008 PROJECT#: 2004-1553-00

D:\E:\mbaron\delaware\2008\ACT167\SUBSERIAL_REPORT_A167\delaware\delaware.dwg

