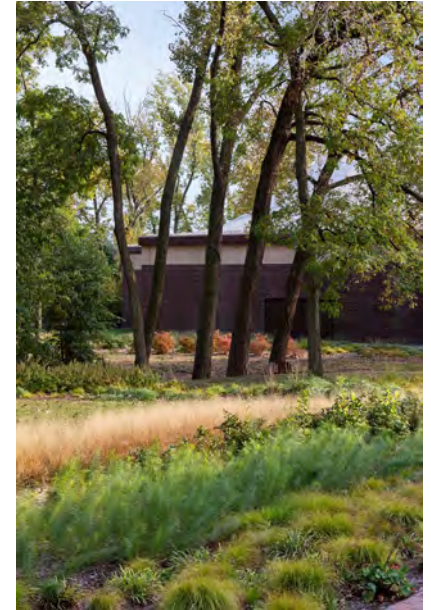


# Community Workshop

March 13, 2021

## Triangle Park Master Plan



# Workshop PURPOSE & GOALS

## Discover

Discover what outdoor amenities are most meaningful and impactful to the community.

## Understand

Understand opportunities and constraints for stakeholders regarding amenities, maintenance, security, "points of pride," etc.

## Achieve

Achieve stakeholder buy-in and inspire leadership and support for preferred amenities.

# What we've been DOING

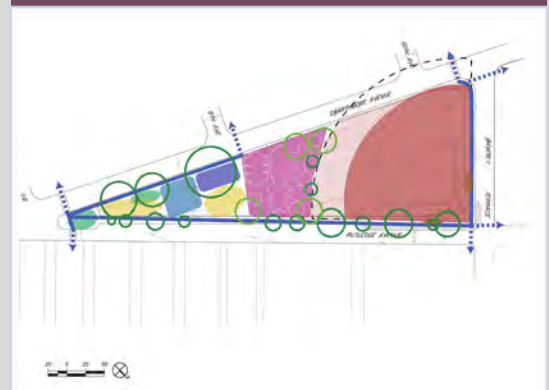
# Interviews



# Data Compilation

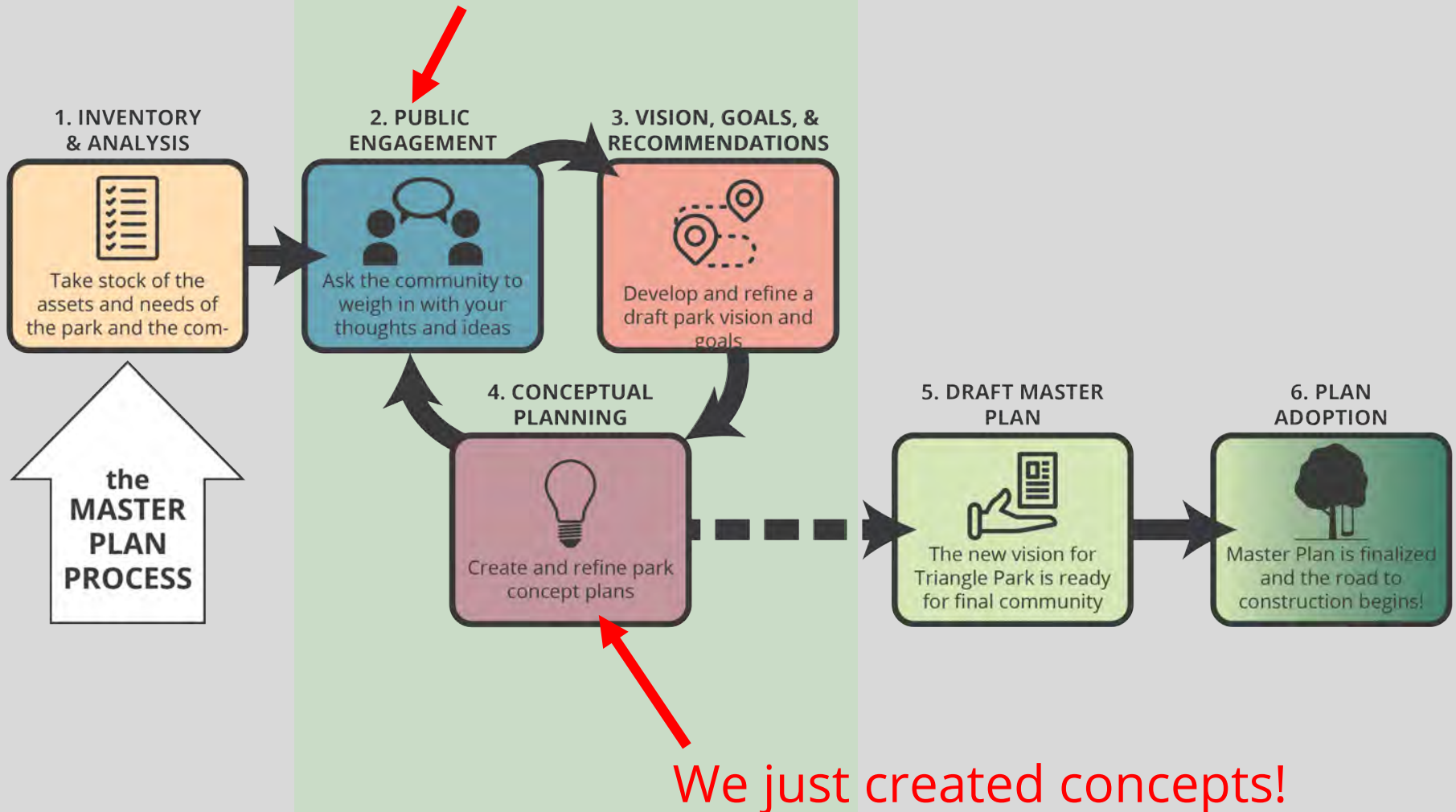


# Designing



# Making a PARK

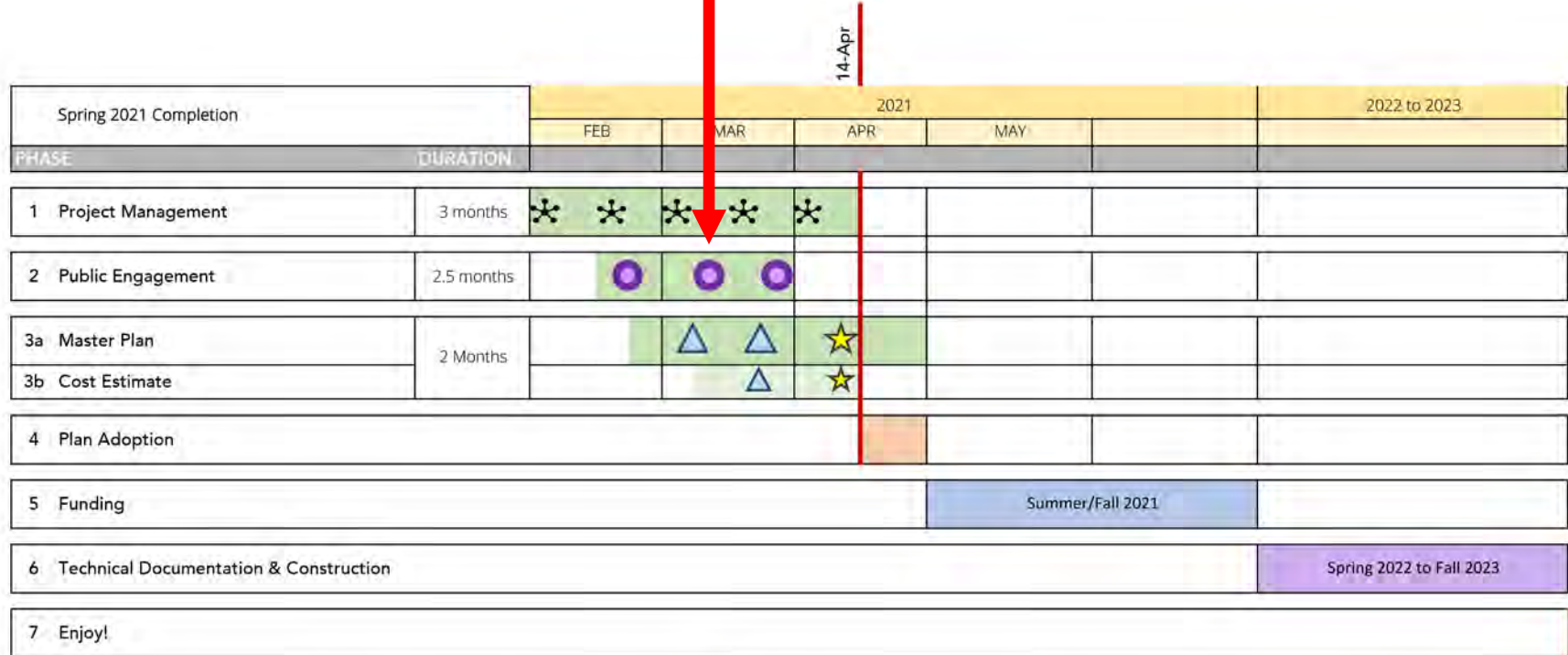
And, right now, we're doing this!





# SCHEDULE

We are here!



KEY	Plan Steering Committee Meeting	Public Meeting	Submission for Client Review	Final Document Submittal
	✱	●	△	★

# Existing SITE





## MS4 Existing and Proposed BMP

# Site CONTEXT



1. Pocket Park - Rain Garden
2. Triangle Park Softball Field (infield & outfield) - Infiltration Bed
- 2A. Triangle Park Softball Field (infield) - Infiltration Bed
- 2B. Triangle Park Softball Field (outfield) - Infiltration Bed
3. Borough Hall - Infiltration Bed
4. Swarthmore & Rutledge Ave (end of Triangle Park) - Rain Garden
5. Triangle Park Playground - Infiltration Bed
6. Waverly Terrace - Infiltration Bed
7. Bump Outs (any street) - Infiltration Bed
8. Rutledge Ave - Infiltration Bed

# Pollution REDUCTION

1. Pocket Park



1 inch = 24 feet

2. Triangle Park - Softball Field



1 inch = 61 feet

3. Borough Hall



1 inch = 50 feet

4. Swarthmore & Rutledge Ave (end of Triangle Park)



1 inch = 27 feet

5. Triangle Park Playground



1 inch = 53 feet

6. Waverly Terrace



1 inch = 35 feet

## Legend

-  Streams
- Planned Best Management Practices**
  -  Infiltration Bed
  -  Rain Garden



# VISION boards





# VISION boards



# What we've HEARD

- More opportunities for play/recreation for all ages  
*Play isn't just for young children!*
- Softball is very important and has a long history in the borough  
*But, field needs improvements and more space for spectators*
- More visual/auditory protection from Swarthmore Ave is needed
- Improve access into and through the park
- More shade (both trees and structures) and seating would be welcome
- A stage/pavilion would enable a wider range of programming for the community
- Ability to maintain the park long-term is a concern
- Park should reflect Rutledge pride!

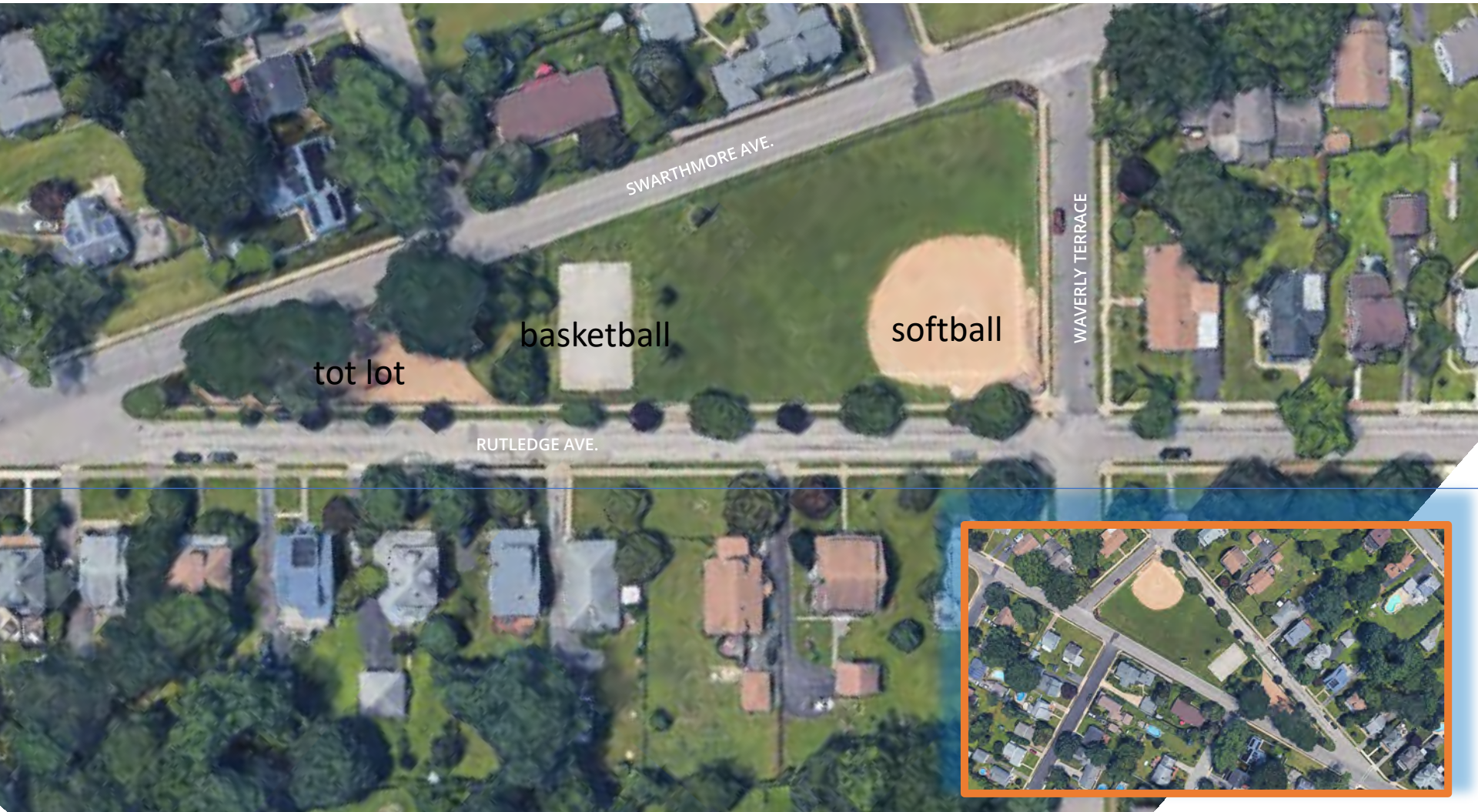


# Concepts





# Existing SITE

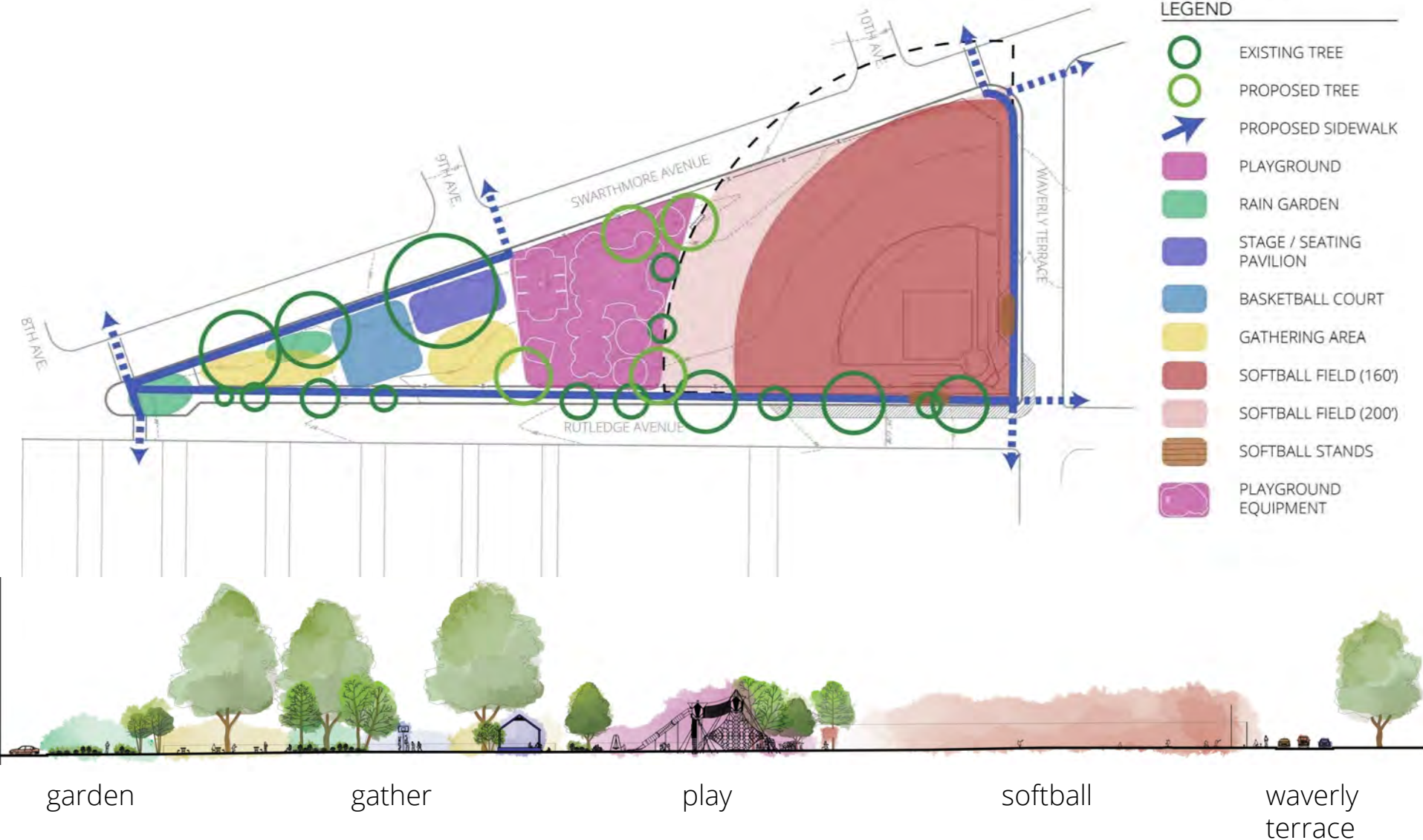


# What do you love about **Central Play**?

## TRIANGLE PARK CONCEPT #1

### LEGEND

- EXISTING TREE
- PROPOSED TREE
- PROPOSED SIDEWALK
- PLAYGROUND
- RAIN GARDEN
- STAGE / SEATING PAVILION
- BASKETBALL COURT
- GATHERING AREA
- SOFTBALL FIELD (160')
- SOFTBALL FIELD (200')
- SOFTBALL STANDS
- PLAYGROUND EQUIPMENT



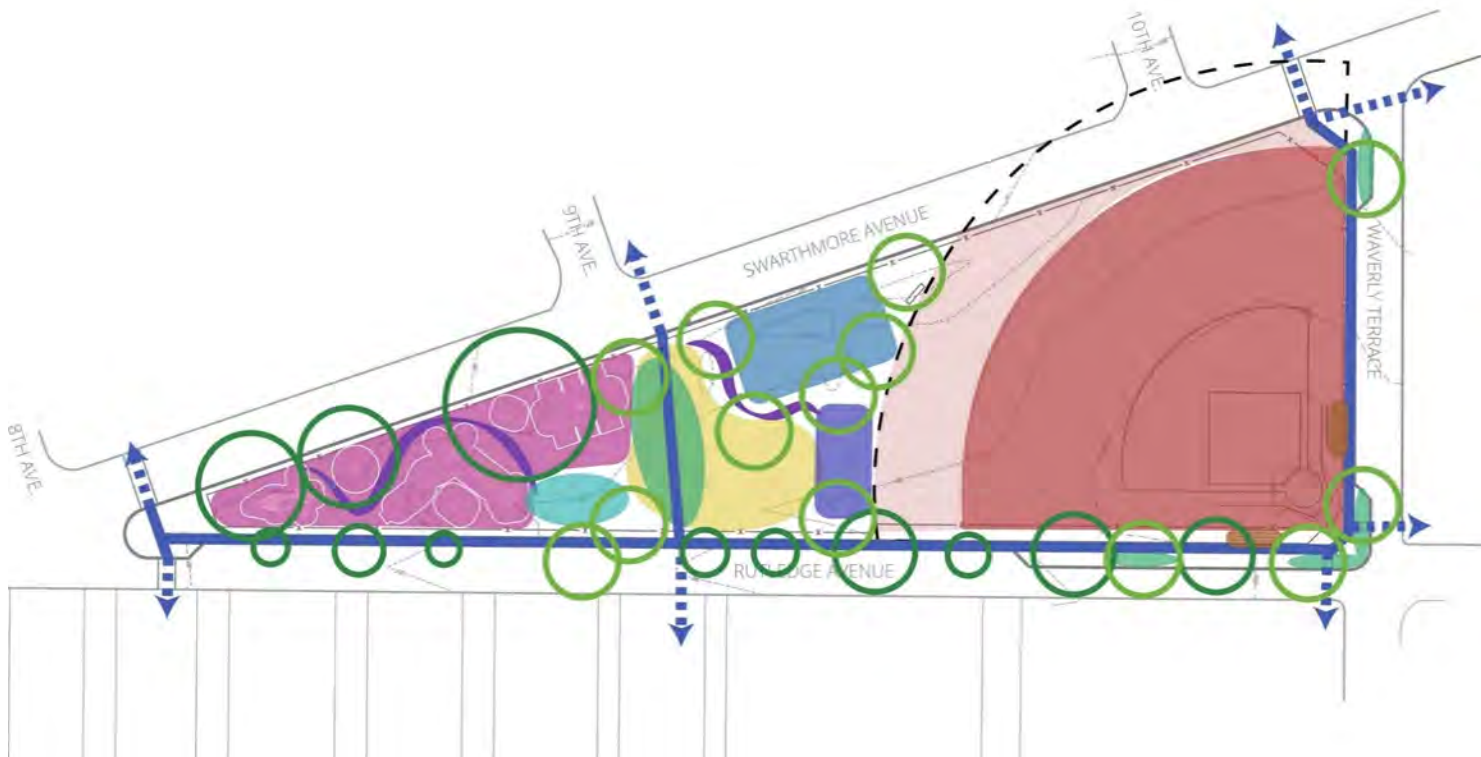


# What do you love about **The Green**?

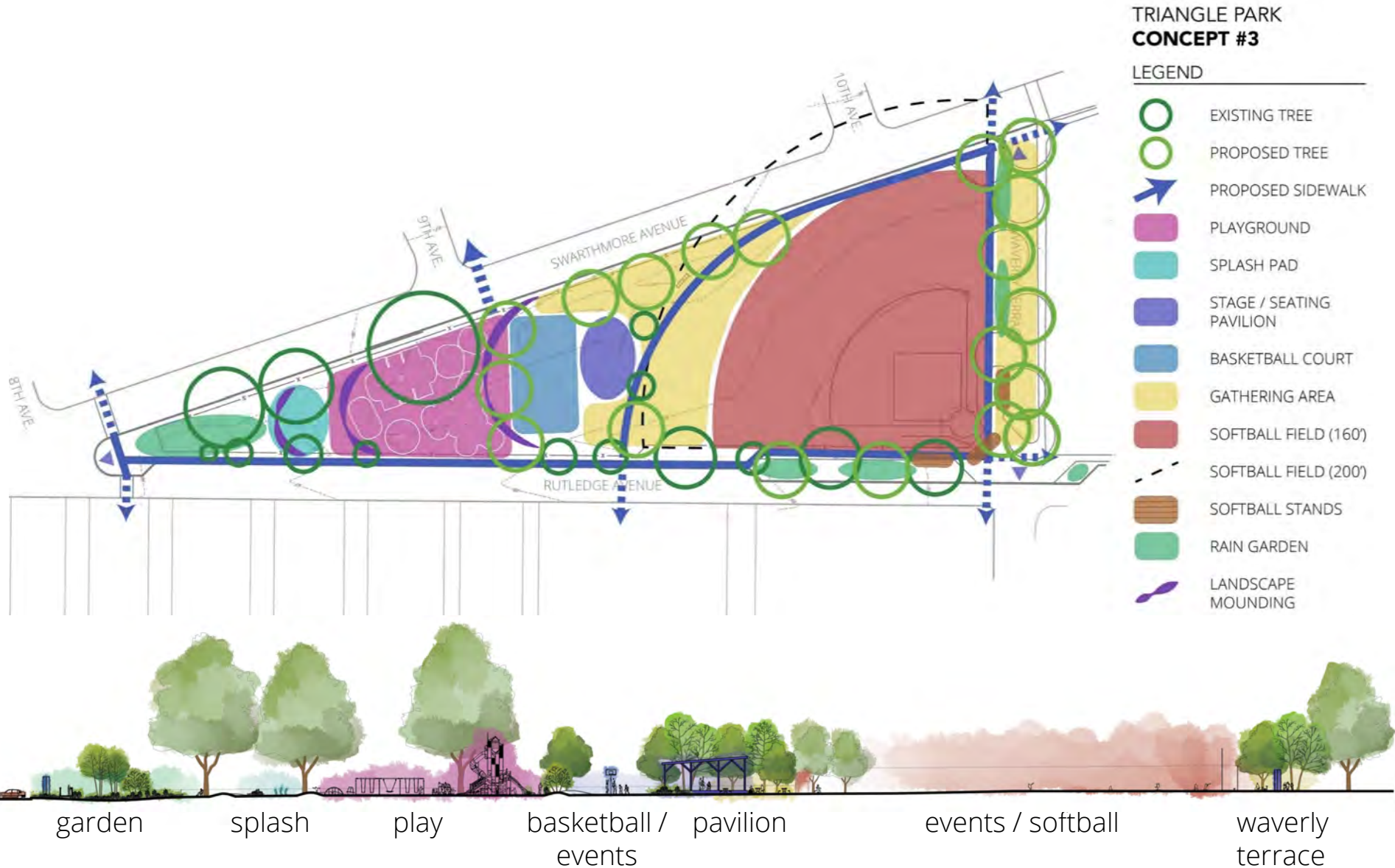
## TRIANGLE PARK CONCEPT #2

### LEGEND

- EXISTING TREE
- PROPOSED TREE
- PROPOSED SIDEWALK
- PLAYGROUND
- SPLASH PAD
- STAGE / SEATING PAVILION
- BASKETBALL COURT
- GATHERING AREA
- SOFTBALL FIELD (160')
- SOFTBALL FIELD (200')
- SOFTBALL STANDS
- RAIN GARDEN
- LANDSCAPE MOUNDING



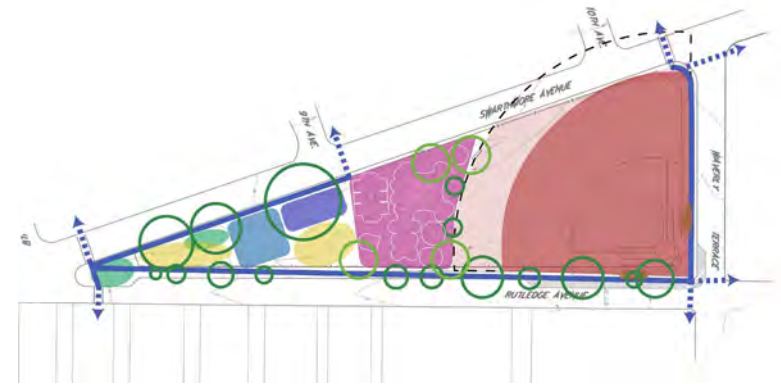
# What do you love about **The Icon**?



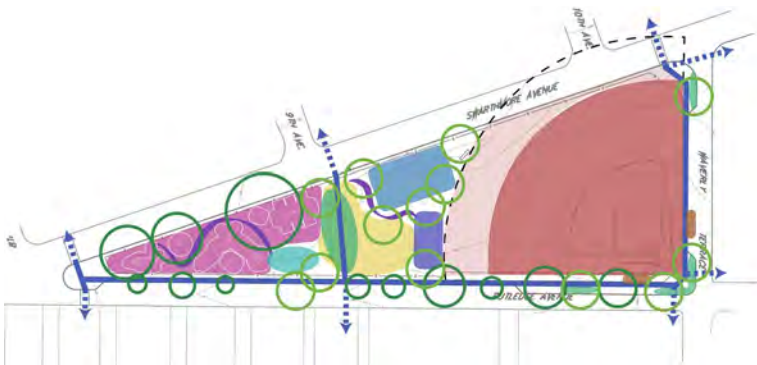
# Which CONCEPT resonated for you? Why?



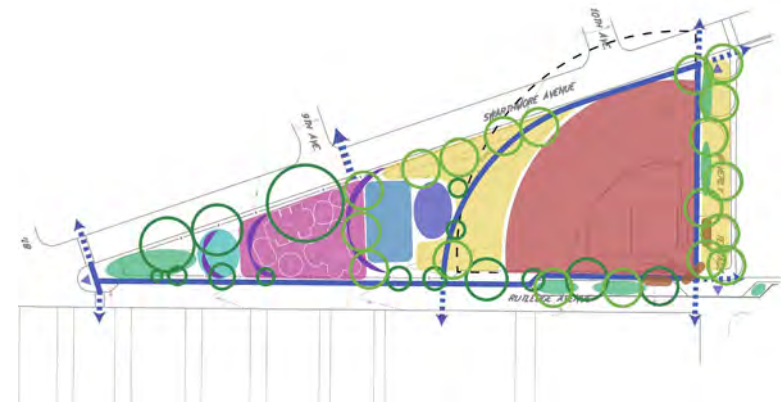
Existing Park



Concept: **Central Play**



Concept: **The Green**



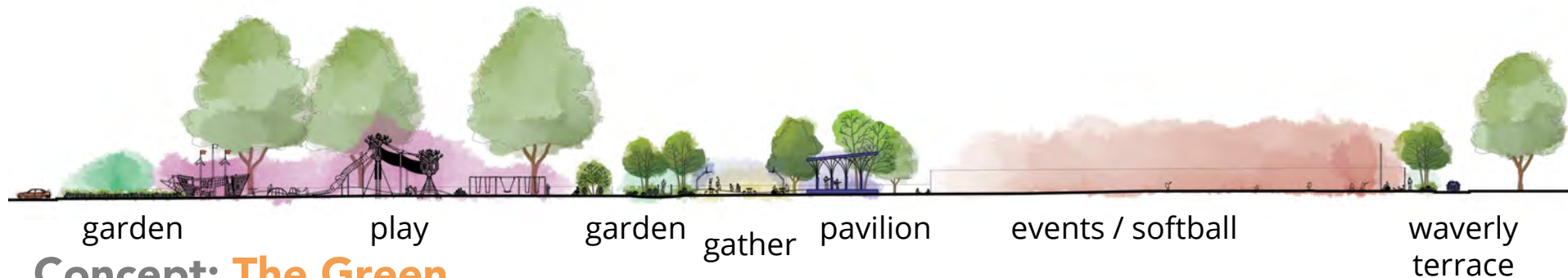
Concept: **The Icon**



# Which CONCEPT resonated for you? Why?



**Concept: Central Play**



**Concept: The Green**



**Concept: The Prism**

# NEXT STEPS



Refine park concepts into one!



Final public meeting



Final master plan

*We hope to see you there!*



# THANK YOU

Heidi Sentivan

[trianglepark@rutledgepa.org](mailto:trianglepark@rutledgepa.org)

(610) 742-7473