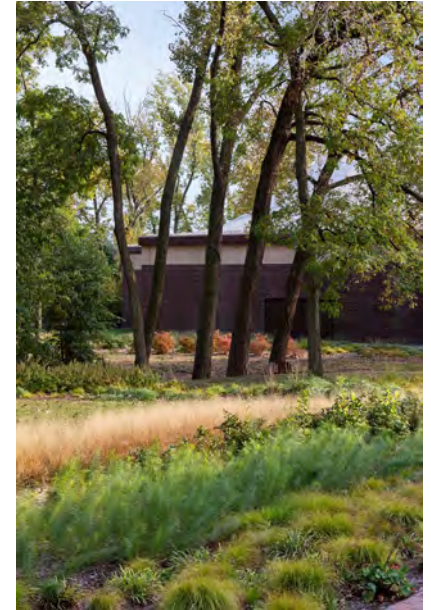


# Community Workshop

April 6, 2021

## Triangle Park Master Plan



# AGENDA

- Welcome to All
- What We've Been Doing
- What We've Heard
- Concept & Discussion
- Next Steps

# WELCOME



*This meeting will be live-streamed and recorded.*



# Our TEAM

- Viridian Landscape Studio

- Tavis Dockweller

- Principal Landscape Architect*

- Victor Trujillo

- Project Manager*

- Leah Grosso

- Landscape Designer*





# What we DO

*"We heal ecological systems while making beautiful places for people."*



*learning • collaboration • responsibility • equity • reflection*



# What we DO





# What we DO



Playspace: Reviving Recess

*an international design competition*

Bright Futures “Chutes and Ladders”

*2016 Grand Prize*



# **STEERING Committee**

- 
- An aerial photograph of a suburban neighborhood. In the center is a large green baseball field with a light-colored infield. Surrounding the field are residential streets, houses with various roof colors, and green lawns. Some houses have swimming pools. The image is used as a background for the steering committee list.
- **Heidi Sentivan**
  - **Samantha Newell**
  - **Hilary Cannarella**
  - **Rachel Hezlep**
  - **Elizabeth Spencer**
  - **Jody Roberts**
  - **Joe Healy**
  - **Michael Stack**
  - **Sue Hunt**
  - **Scott Hezlep**



# Workshop GOALS

## Discover

Discover what outdoor amenities are most meaningful and impactful to the community.

## Understand

Understand opportunities and constraints for stakeholders regarding amenities, maintenance, security, "points of pride," etc.

## Achieve

Achieve stakeholder buy-in and inspire leadership and support for preferred amenities.

# What we've been DOING

# Interviews



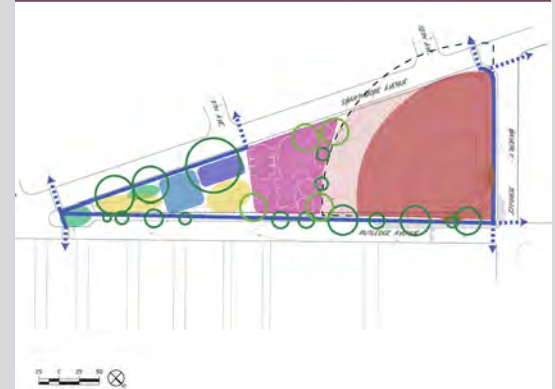
20 phone interviews with residents & stakeholders

# Data Compilation



30+ vision boards  
received & reviewed  
28 participants at first public  
meeting, 18 at second

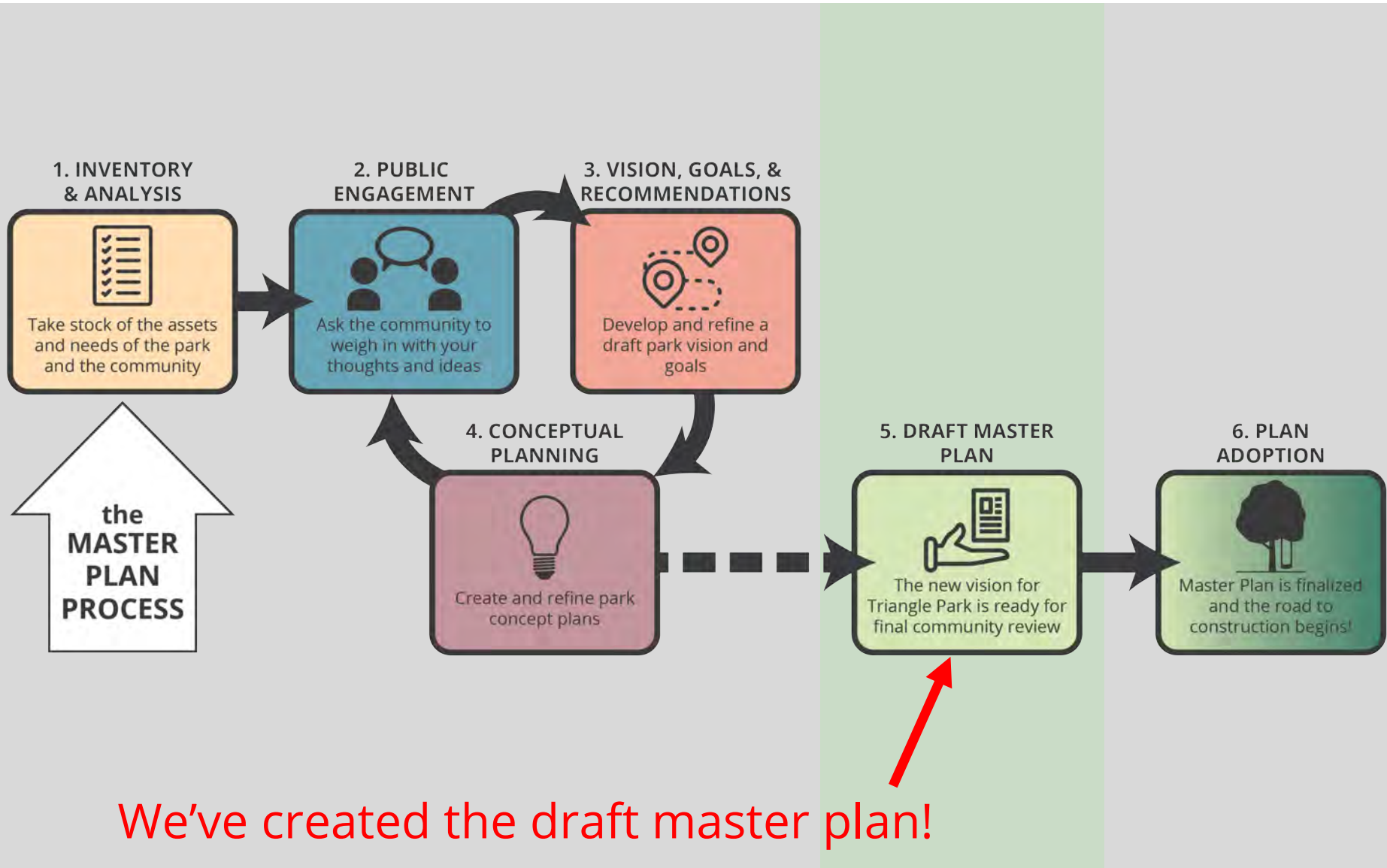
# Designing



3 preliminary concepts  
presented for feedback,  
1 final concept

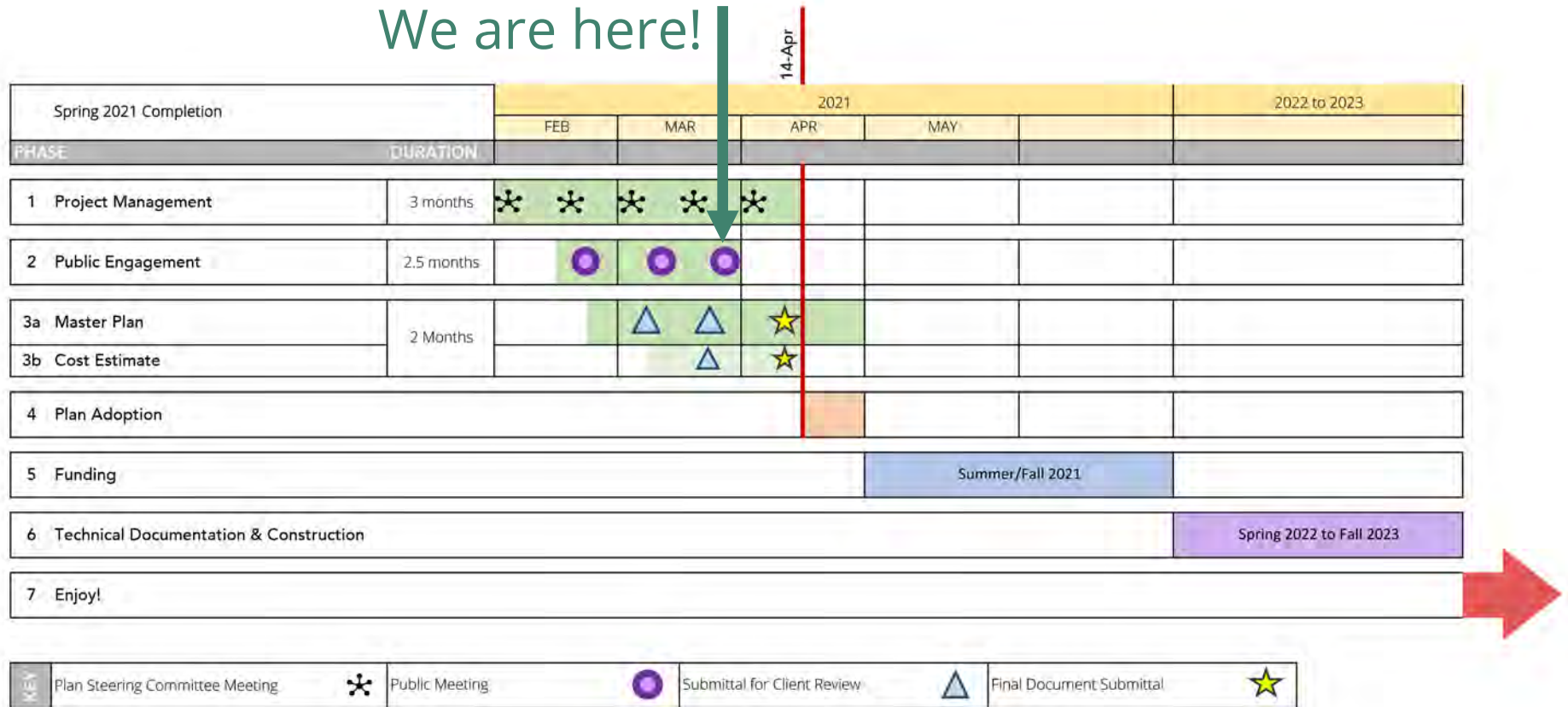


# Making a PARK



# SCHEDULE

We are here!





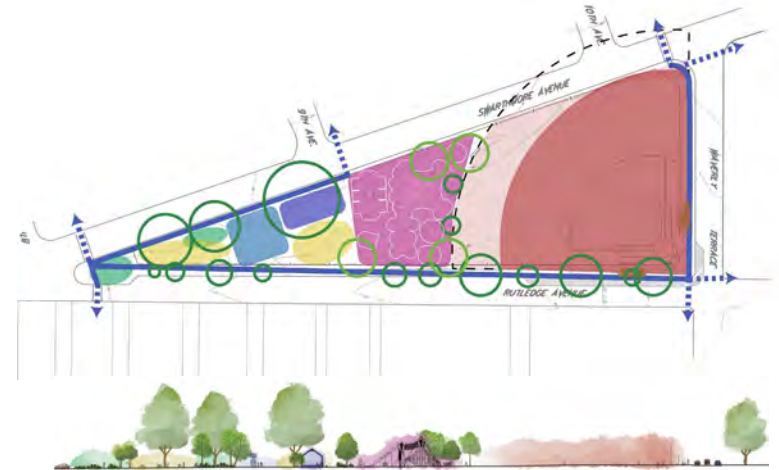
# VISION boards



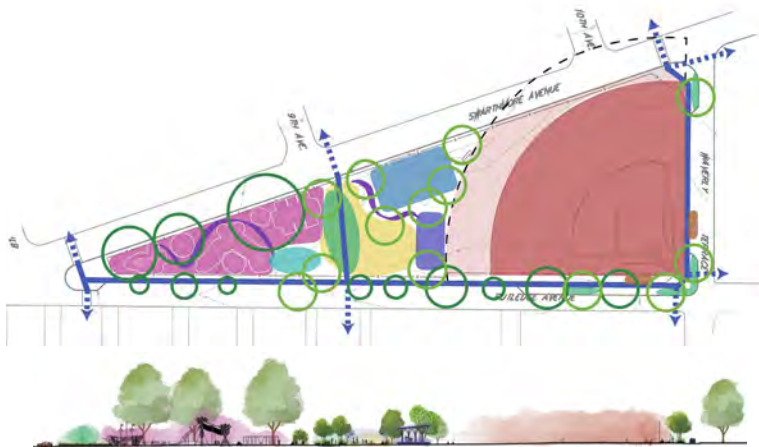
# The RECAP!



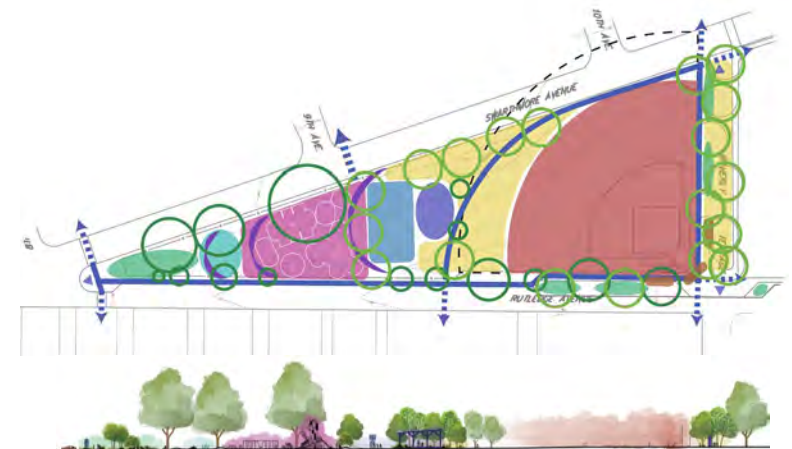
Existing Park



Concept: **Central Play**



★ Concept: **The Green**



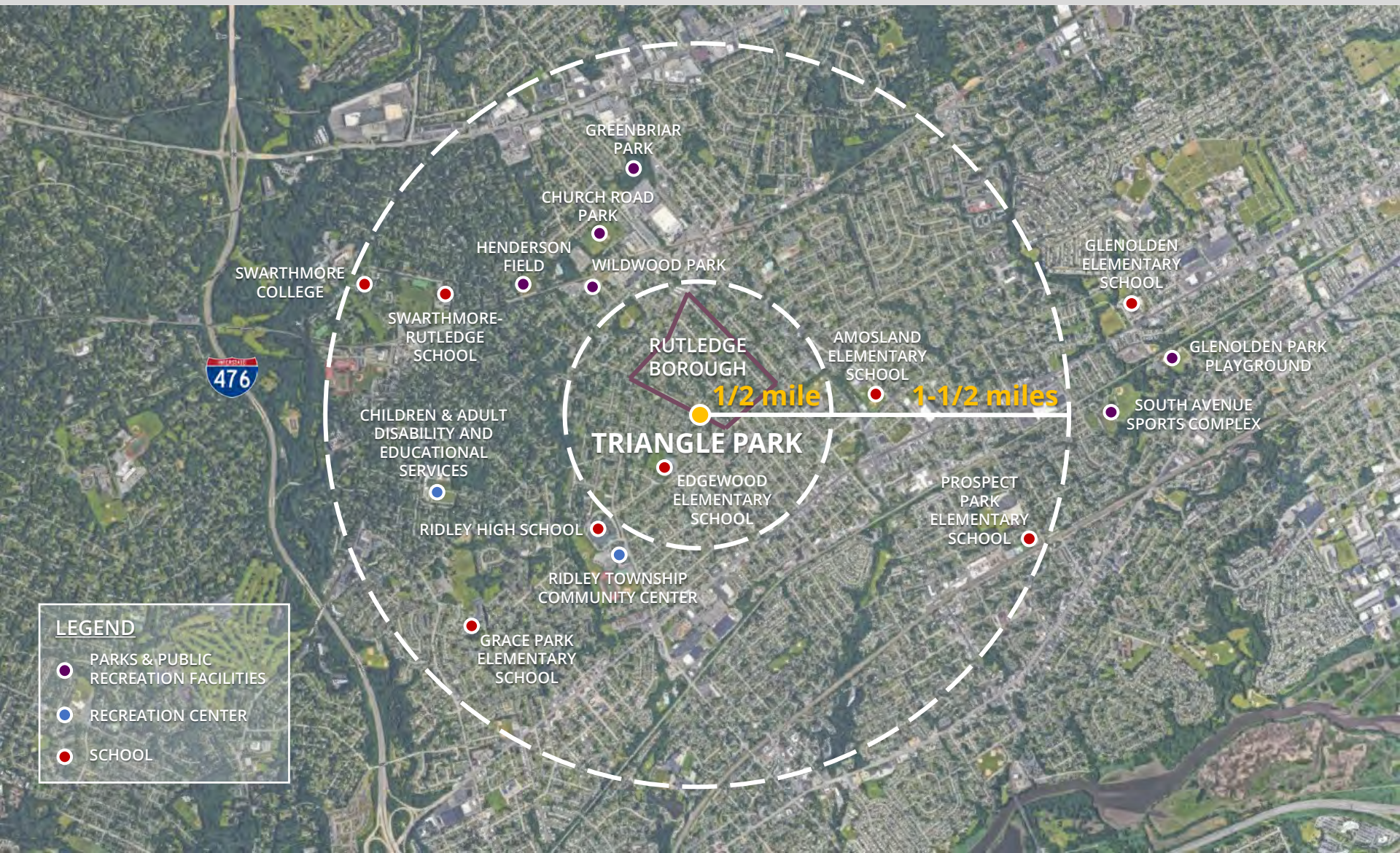
★ Concept: **The Icon**

# What we've HEARD

- More opportunities for play/recreation for all ages  
*Play isn't just for young children!*
- Softball is very important and has a long history in the borough  
*But, field needs improvements and more space for spectators*
- More visual/auditory protection from Swarthmore Ave is needed
- Improve access into and through the park
- More shade (both trees and structures) and seating would be welcome
- A stage/pavilion would enable a wider range of programming for the community
- Create a more inclusive park, for all generations and abilities
- Park should reflect Rutledge pride!



# Site CONTEXT





# Site CONTEXT

Multi-Municipality Comprehensive Plan...



Rutledge has sidewalks throughout!



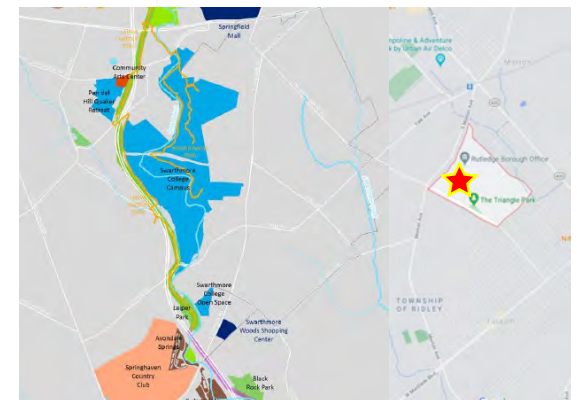
And you have a "Medical Mile"



DelCo Sidewalk Inventory



DelCo PROS Plan: Trails





# Park Concept

- Overall Concept
- Concept in Detail
- Crossings & Access
- Lighting
- Green Infrastructure
- Native Plants & Trees
- Discussion



# Existing SITE



# Triangle Park: The Heart of Rutledge





# Triangle Park: The Heart of Rutledge



# Triangle Park: **The Heart of Rutledge**





# Triangle Park: Gather



# Triangle Park: Gather



pavilions / stages



boardwalk and bridges





# Triangle Park: Gather



half-court basketball



pickleball



handball



movie nights



seating



accessible activities



# Triangle Park: Gather



sharing library



art



remember & celebrate



lighting



game tables



hammocks



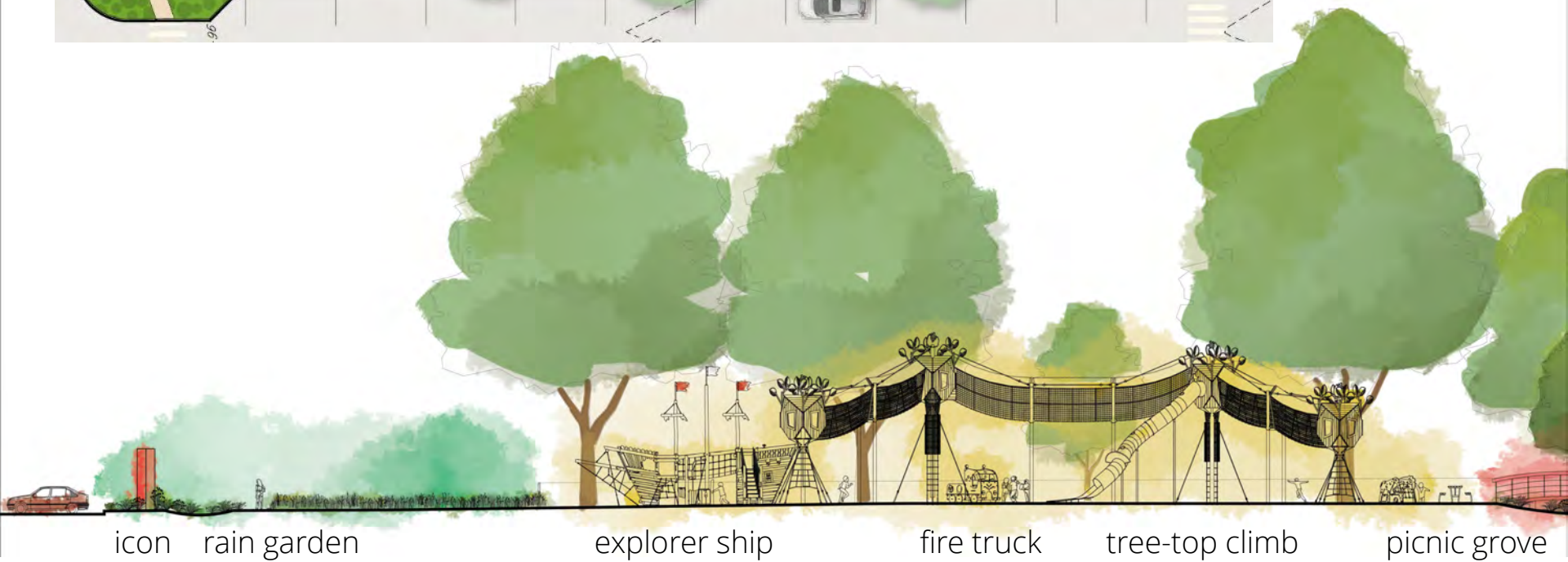
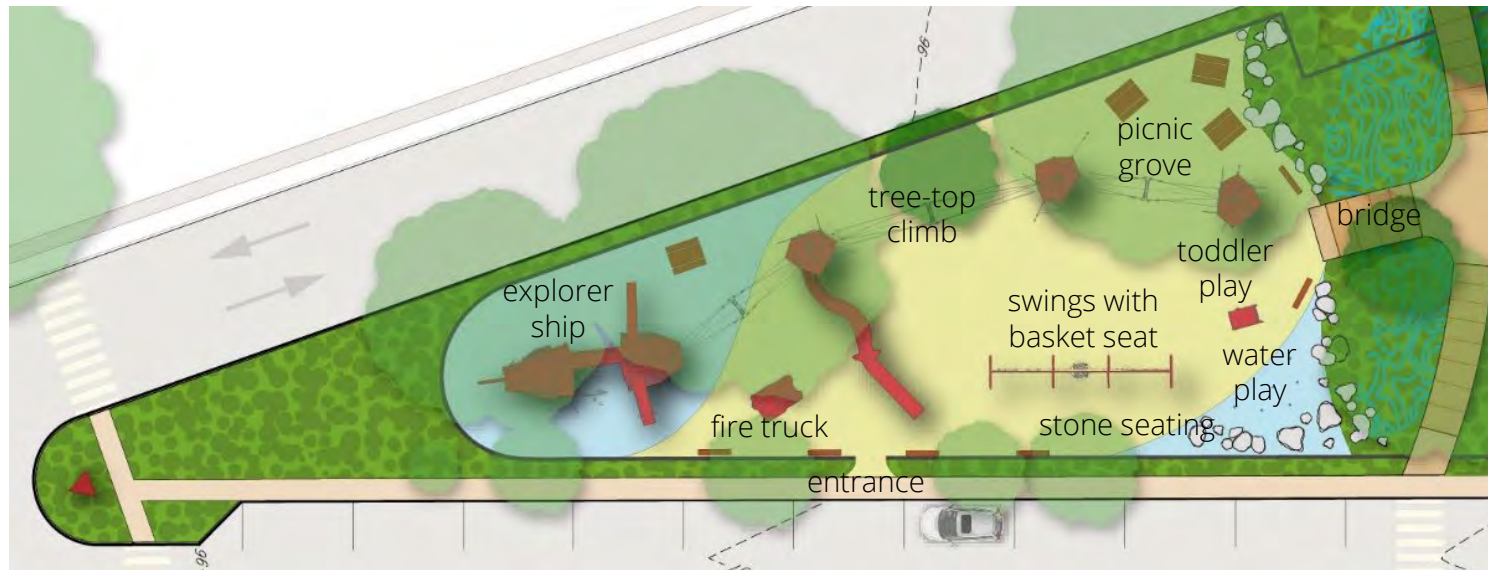
# Triangle Park: Gather



garden and natural settings

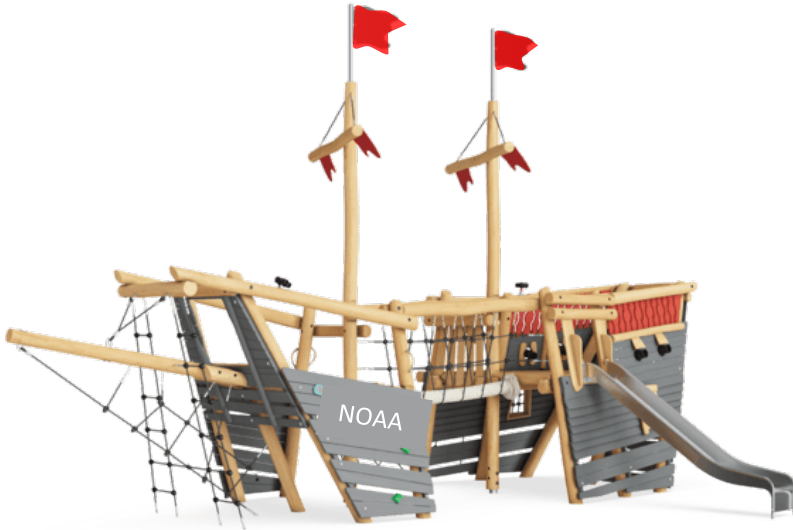


# Triangle Park: **Adventure**





# Triangle Park: **Adventure**



iconic play structure(s) and places to climb, bounce, hang, and swing for *all* ages, from big kids...

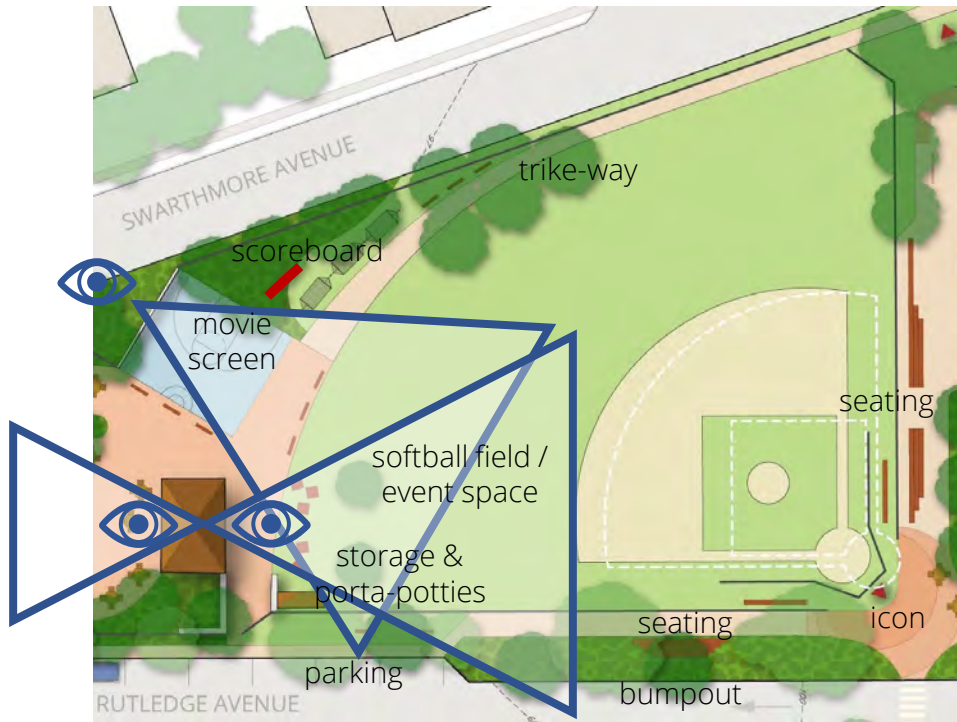


# Triangle Park: Adventure

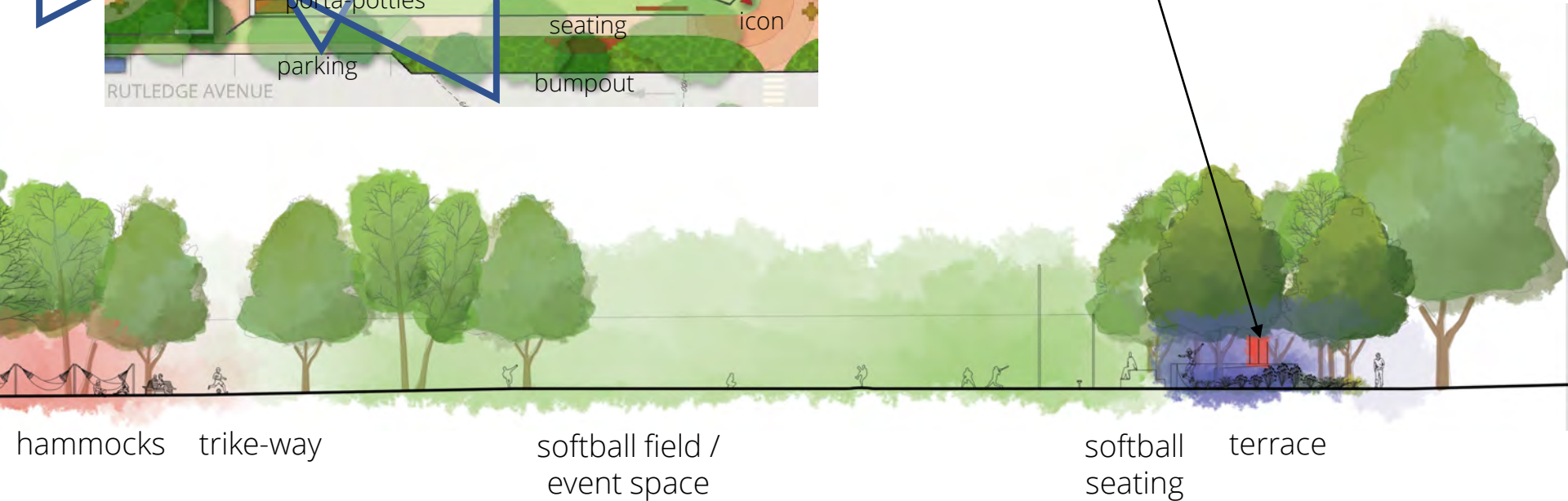


to smaller kids, including water and music play

# Triangle Park: **Softball & Events**



icon





# Triangle Park: **Softball & Events**



flexible space, places for food trucks, moveable seating and porta-potties in disguise

# Triangle Park: Terrace Opportunities



Bump-outs w/  
optional gates for  
select road closures

*Waverly: One-way*



Expanded park w/  
optional gates for  
select road closures

*Waverly: One-way*



Linear Park A:  
Play & picnic area

*Waverly: Closed*



Linear Park B:  
Skate/bike facilities

*Waverly: Closed*



# Triangle Park: Terrace



sculptural seating, trees, and places to bike



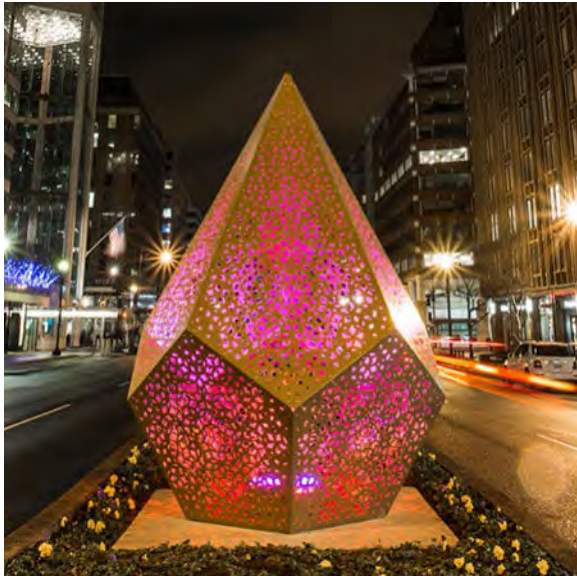
# Triangle Park: Terrace



skateboard facilities

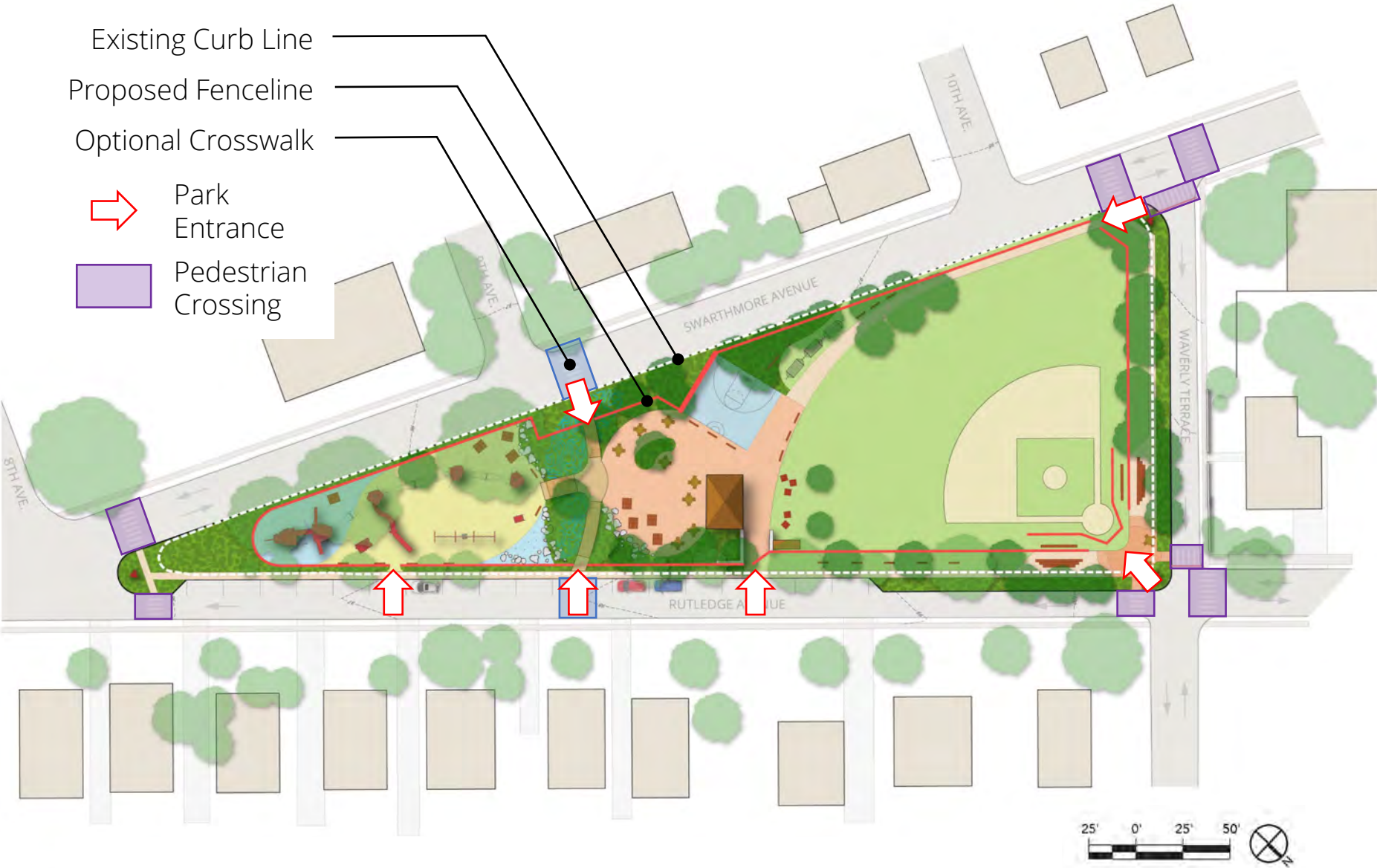


# Triangle Park: **Art & Arrival**



art and signage can take many forms

# Crossings & Access





# Crossings & Access

Traffic Calming: US Dept. of Transportation Federal Highway Administration



Figure 3.10.1. Speed Hump with Bicycle Lane and On-Street Parking  
(Source: Scott Batson)

speed hump/table

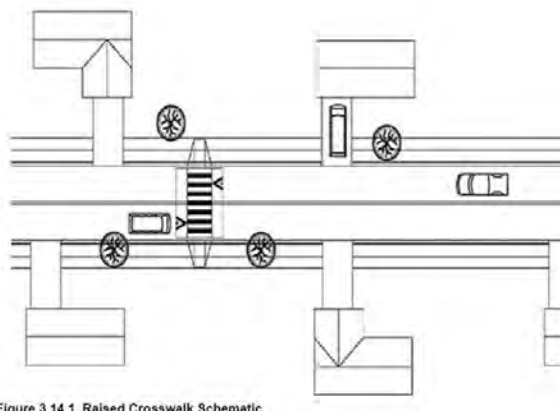


Figure 3.14.1. Raised Crosswalk Schematic  
(Source: Delaware Department of Transportation)

raised crosswalk



Figure 3.14.2. Typical Raised Crosswalk Application  
(Source: Jeff Guiden)



raised crosswalk



lighting and signage

# Lighting

## LEGEND

- Iconic Lighting
- Pedestrian Lighting
- Event Lighting
- Ambient Lighting
- Optional Ambient Lighting





# Lighting



movie screening



ambient lighting



landscape lighting



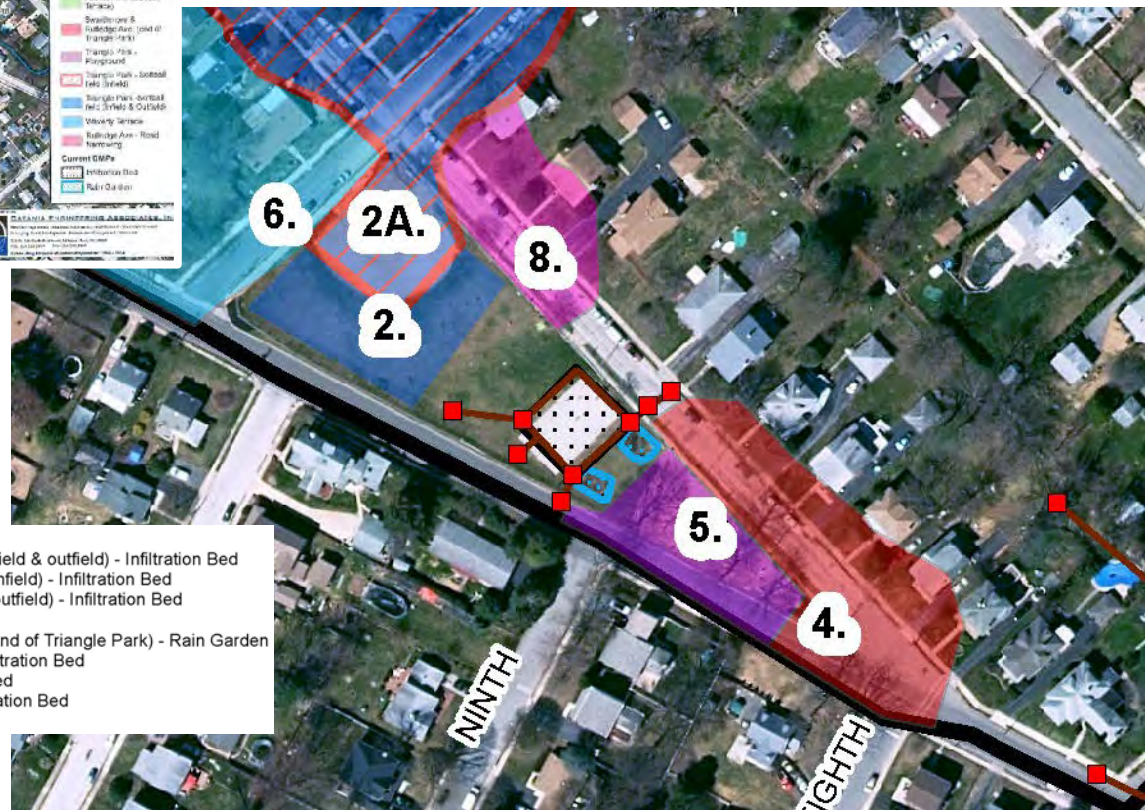
path lighting



shade structure lighting



## MS4 Existing and Proposed Best Management Practice (BMP)





# Green Infrastructure

## MS4 Existing and Proposed Best Management Practice (BMP)

1. Pocket Park



1 inch = 24 feet

2. Triangle Park - Softball Field



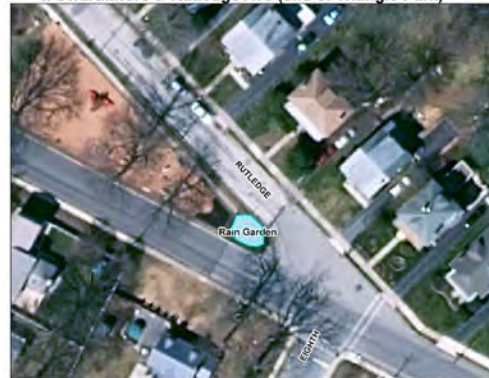
1 inch = 51 feet

3. Borough Hall



1 inch = 30 feet

4. Swarthmore & Rutledge Ave (end of Triangle Park)



1 inch = 27 feet

5. Triangle Park Playground



1 inch = 33 feet

6. Waverly Terrace



1 inch = 35 feet

### Legend

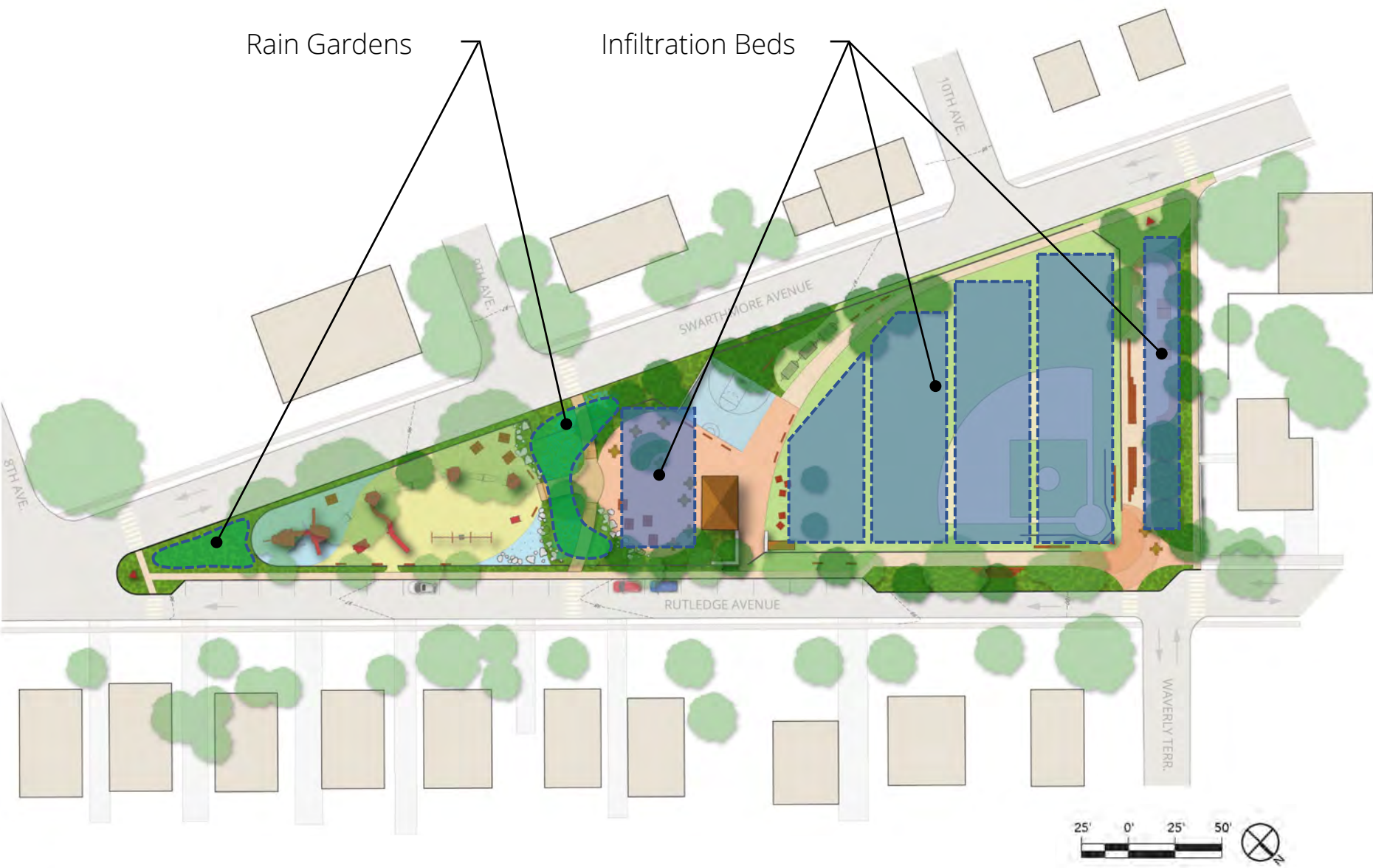
Streams

### Planned Best Management Practices

Infiltration Bed

Rain Garden

# Green Infrastructure





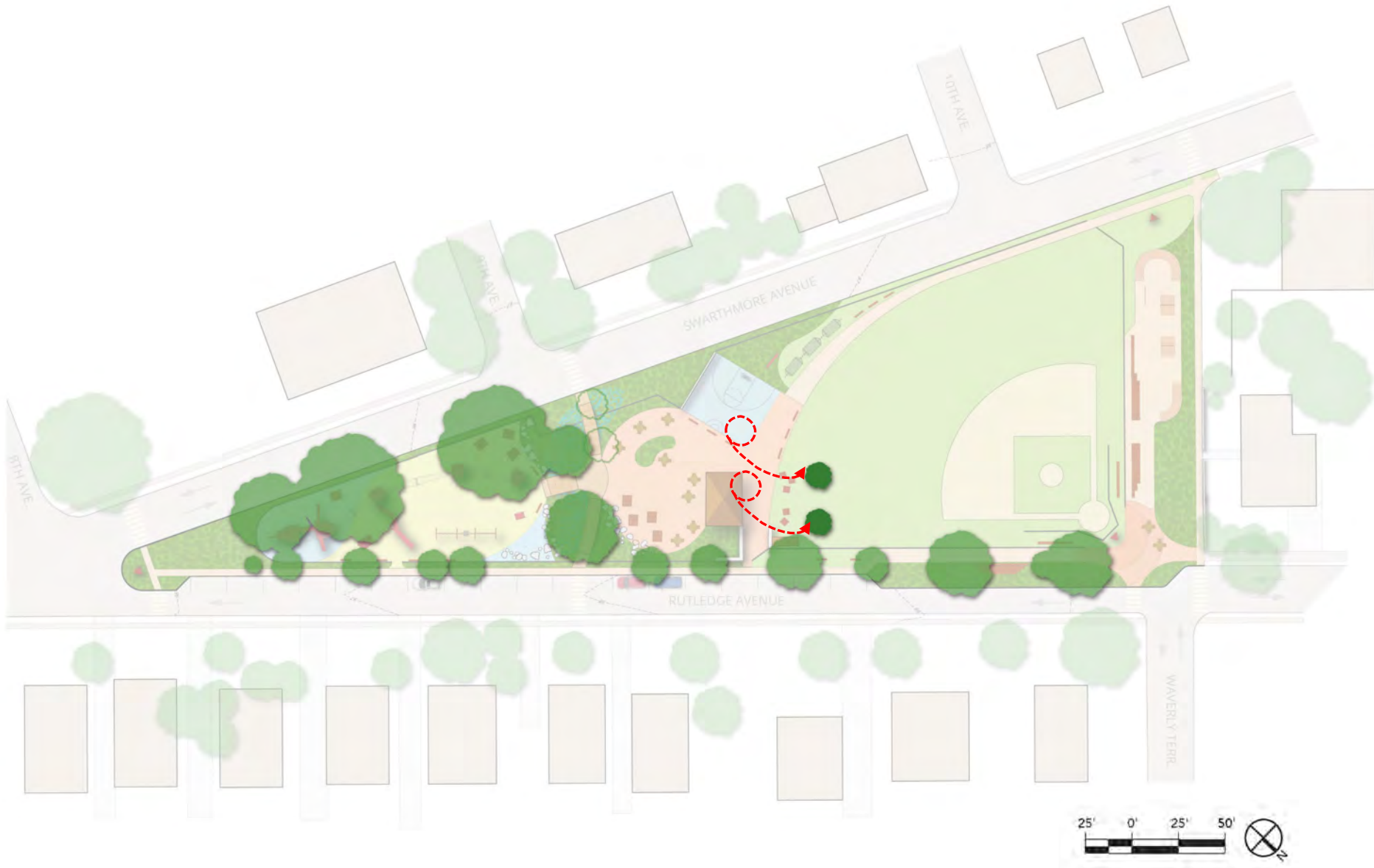
# Native Plants: Building on your efforts

## Existing Tree Locations



# Native Plants: **Building on your efforts**

Existing Tree Locations: Removals/Relocations





# Native Plants: **Building on your efforts**

Proposed New Tree Locations



# Native Plants: **Building on your efforts**



Protect existing trees to remain

Add new canopy and understory trees



# Native Plants: Building on your efforts

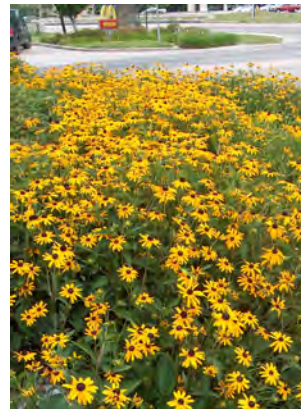
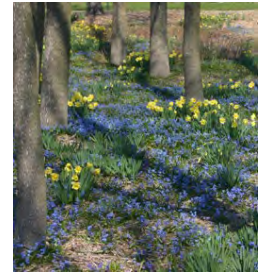


## Some ways to protect your assets:

- Assess and care for trees early
- Minimize impervious cover
- Use pervious materials wherever possible
- Choose your construction methods carefully
  - Helical piles or other methods that minimize soil disturbance
- Protect to the dripline and trunk
- Spread construction machinery loads with thick layers of mulch or gravel
- Minimize damage to roots
  - Air spading
  - Prune Roots
  - Use alternatives to root pruning, such as bridging or boring
- Control site access



# Native Plants: Building on your efforts



shrubs

herbaceous & perennials



# Discussion



# NEXT STEPS



Update final plan with community feedback



Deliver final master plan report



Plan approval



# NEXT STEPS and beyond



Secure funding



Develop 1<sup>st</sup> phase construction documents



Break ground on construction!

**THANK YOU!**

Heidi Sentivan

[trianglepark@rutledgepa.org](mailto:trianglepark@rutledgepa.org)

(610) 742-7473